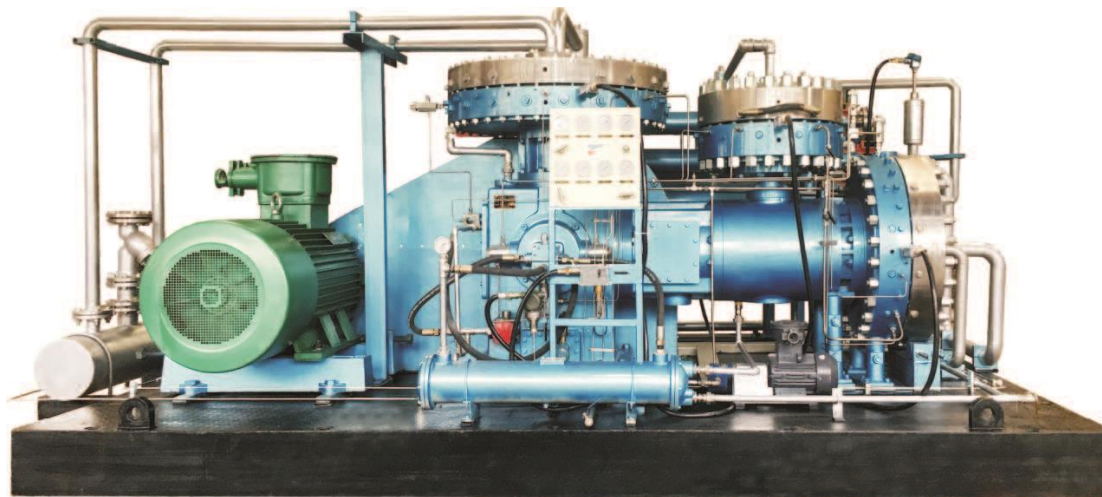




SinoCleansky



Diaphragm Compressor

Date: 2020

Diaphragm Compressor

Content:

1. Our products.....	2
1.1 Application series in the field of hydrogen energy.....	2
1.2 General field application product series.....	5
2. Working principle.....	9
3. Product features.....	10
4. Product application.....	11
5. Product model description.....	12
6. Product series.....	13
7. After-sale warranty.....	20

1. OUR PRODUCTS:

1.1 APPLICATION SERIOUS IN THE FIELD OF HYDROGEN ENERGY

1.1.1 Suitable for 35Mpa hydrogen refueling station (external hydrogen supply) diaphragm compressor



Technical Parameters:

- ◆ Capacity: 20~3000Nm³ /h (Exhaust volume)
- ◆ Suction pressure: 5.0~20.0Mpa(G)
- ◆ Exhaust pressure: 45.0Mpa(G)
- ◆ Power: 15~220KW

Characteristic:

- ◆ Wide range of intake pressure, suitable for hydrogen refueling stations without hydrogen production;
- ◆ Compressor integrated system is perfect, all interfaces are arranged uniformly, easy to install;
- ◆ The cooling system is perfect to ensure the performance and life of the compressor;
- ◆ The hydraulic system of the compressor uses an automatic regulating valve, which consumes little power and is energy saving and environmentally friendly;
- ◆ Automatic unloading, automatic start and stop for remote control;
- ◆ Reasonable speed, stable compressor operation and low noise;
- ◆ Equipped with lifting device for easy compressor maintenance.

1.1.2 Suitable for 70Mpa hydrogenation station (external hydrogen supply) diaphragm compressor



Technical Parameters:

- ◆ Capacity: 25~2500Nm³/h (Exhaust volume)
- ◆ Suction pressure: 10.0~45.0Mpa(G)
- ◆ Exhaust pressure: 100.0Mpa(G)
- ◆ Power: 22.0~220KW

Characteristic:

- ◆ Wide range of intake pressure, suitable for hydrogen refueling stations without hydrogen production;
- ◆ The cooling system is perfect to ensure the performance and life of the compressor;
- ◆ The compressor hydraulic system uses an automatic regulating valve, which consumes little energy and is energy-saving and environmentally friendly;
- ◆ Automatic unloading, automatic start and stop for remote control;
- ◆ Reasonable speed, stable compressor operation and low noise.

1.1.3 Suitable for 35Mpa hydrogenation station (external hydrogen supply) diaphragm compressor



Technical Parameters:

- ◆ Capacity: 60~620Nm³/h (Exhaust volume)
- ◆ Suction pressure: 0.1~0.6Mpa(G)
- ◆ Discharge pressure: 45.0Mpa(G)
- ◆ Powder: 37~185KW

Characteristic:

- ◆ Low intake pressure, high exhaust pressure, three-stage compression, suitable for hydrogen production with low outlet pressure
- ◆ The compressor integrated system is perfect, the explosion-proof control cabinet, the explosion-proof chiller and the compressor are installed on the same armored chassis, which is easy to operate;
- ◆ Self-contained cooling system, perfect insulation protection to ensure the performance and life of the compressor;
- ◆ The hydraulic system of the compressor uses an automatic regulating valve, which consumes little power and is energy-saving and environmentally friendly;
- ◆ Automatic unloading, automatic start and stop for remote control;
- ◆ The largest displacement compressor with three-stage compression from low pressure to high pressure in China.

1.1.4 Suitable for 22Mpa hydrogenation station (external hydrogen supply) diaphragm compressor



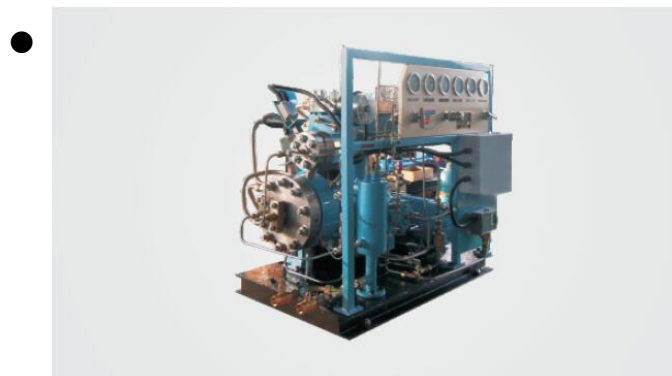
Technical Parameters:

- ◆ Capacity: 65~1000Nm³/h (Exhaust volume)
- ◆ Intake pressure: 0.7~2.0Mpa(G)
- ◆ Discharge pressure: 22.0Mpa(G)
- ◆ Powder: 37~185KW

Characteristic:

- ◆ For dynamic balance structure, low vibration, and low noise;
- ◆ The compressor hydraulic system uses an automatic regulating valve, which consumes little energy and is energy-saving and environmentally friendly;
- ◆ Automatic unloading, automatic start and stop for remote control;
- ◆ Compressor number is reasonable, oil pressure is stable, equipment is more reliable and stable;
- ◆ The cavity design is optimized and the diaphragm life is high.

1.2 GENERAL FIELD APPLICATION PRODUCT SERIES



D044 series diaphragm compressor

- ◆ Includes single stage Z, type and two stage
- ◆ compression L type
- ◆ Pressure up to 100Mpa
- ◆ Flow varies with intake pressure

- ◆ Powder up to 2.2KW



D060 series diaphragm compressor

- ◆ Including single Z L type and two stage compression L type
- ◆ Pressure up to 120MP
- ◆ Flow varies with intake pressure
- ◆ Power up to 4.0kW



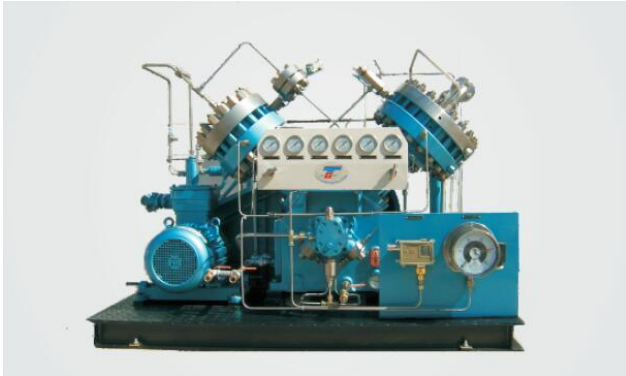
D070 series diaphragm compressor

- ◆ Includes single-stage Z, L-type, and two-stage compression L, W, and three-stage W
- ◆ Pressure up to 120MPa
- ◆ Flow varies with intake pressure
- ◆ Power up to 5.5kW



D095 series diaphragm compressor

- ◆ Includes single stage Z, L, V and two stages of compression L, V type
- ◆ Pressure up to 150MPa
- ◆ Flow varies with intake pressure
- ◆ Power up to 7.5 kW



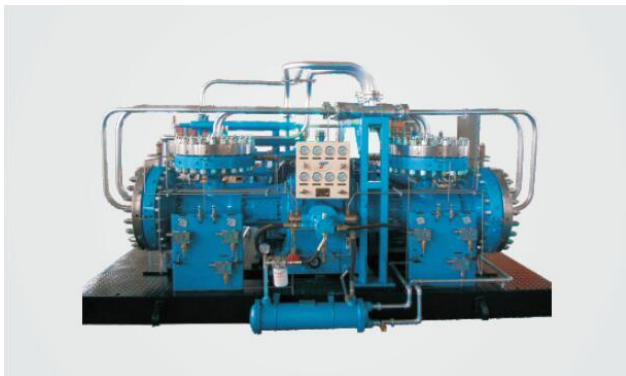
D105 series diaphragm compressor

- ◆ Including single-stage Z, L, V and two-stage compression L, V type
- ◆ Pressure up to 150MPa
- ◆ Flow varies with intake pressure
- ◆ Power up to 18.5kW



D130 series diaphragm compressor

- ◆ Includes single stage Z, L and two stage compression L type and three stage L type
- ◆ Pressure up to 150MPa
- ◆ Flow varies with intake pressure
- ◆ Power up to 55Kw



2D130 series diaphragm compressor

- ◆ Includes single-stage four-film head H-type and two-stage compression four-film head H-type
- ◆ Pressure up to 25MPa
- ◆ Flow varies with intake pressure
- ◆ Power up to 90Kw



D165 series diaphragm compressor

- ◆ Includes single stage Z, L type and two stage compression L type
- ◆ Pressure up to 150MPa
- ◆ Flow varies with intake pressure
- ◆ Power up to 90Kw



D185 series diaphragm compressor

- ◆ Includes single stage H type and two or three stage compression type H
- ◆ Pressure up to 150MPa
- ◆ Flow varies with intake pressure
- ◆ Power up to 185Kw



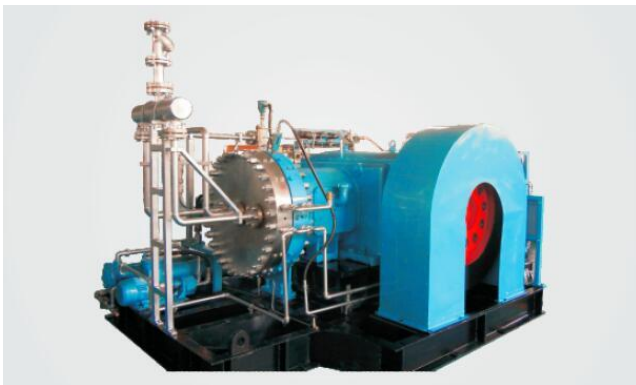
D188H series diaphragm compressor

- ◆ Includes single stage H type and two or three stage compression type H
- ◆ Pressure up to 150MPa
- ◆ Flow varies with intake pressure
- ◆ Power up to 220Kw



D1812H series diaphragm compressor

- ◆ Includes single stage H type and two or three stage compression type H
- ◆ Pressure up to 150MPa
- ◆ Flow varies with intake pressure
- ◆ Power up to 250Kw

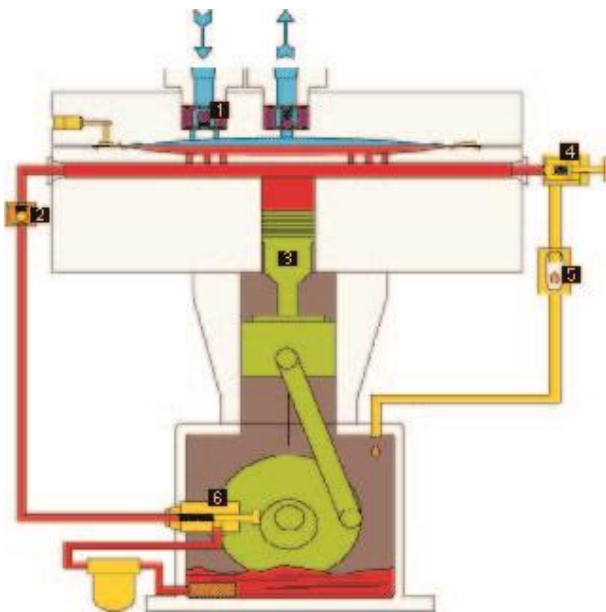


D210H series diaphragm compressor

- ◆ Including single-stage Z, L, V and two-stage compression L, V type
- ◆ Pressure up to 150MPa
- ◆ Flow varies with intake pressure
- ◆ Power up to 280Kw

2. WORKING PRINCIPLE:

The diaphragm compressor is a special type of positive displacement compressor. It uses a diaphragm to separate the compressed medium from the oil. Due to its special structure, the compressed medium does not contact any



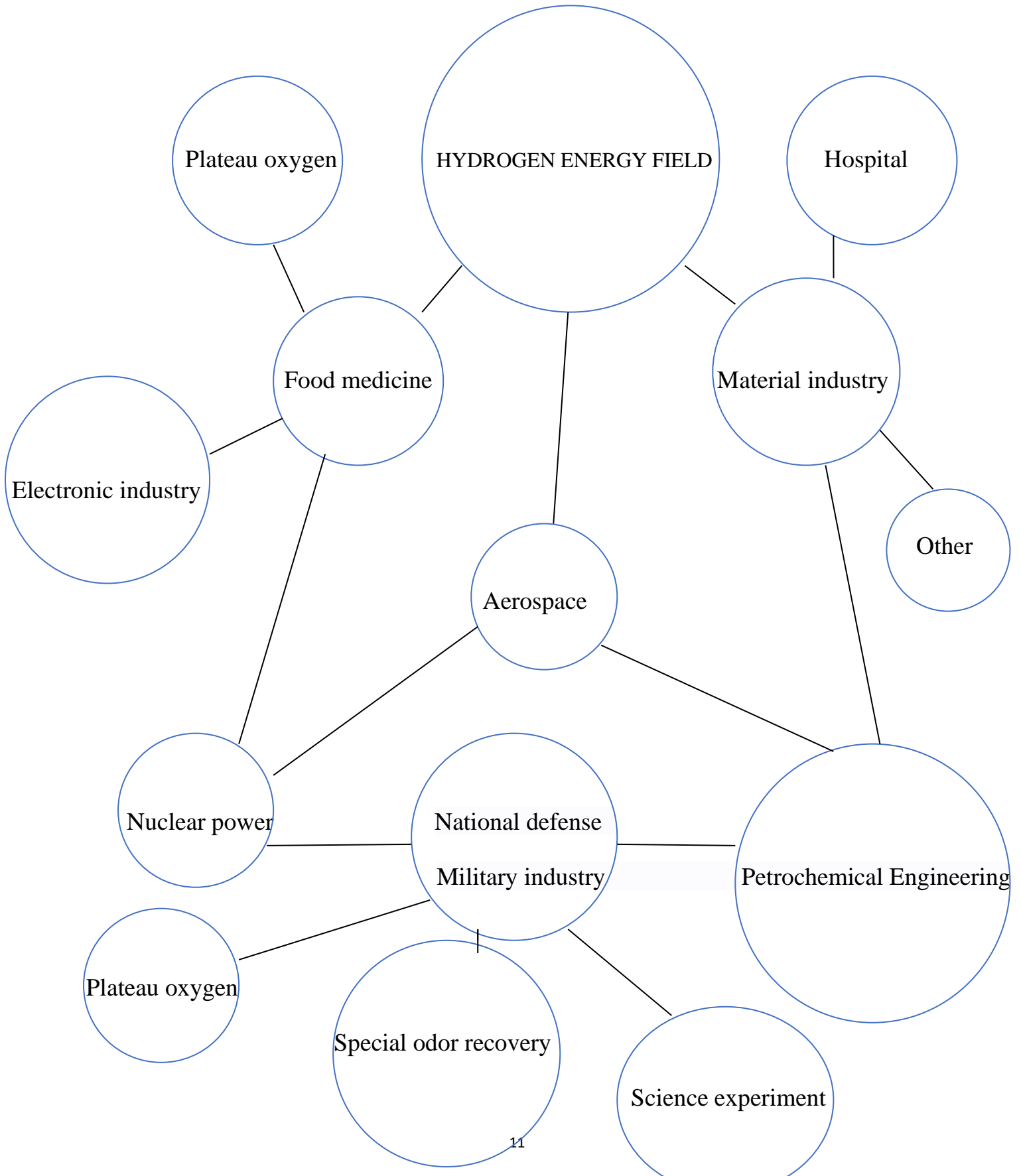
lubricant. The cylinder does not need lubrication, and the sealing performance. Very good, so it is suitable for compressing and conveying high purity gas, rare gas, corrosive gas, and radioactive, toxic, and explosive gas. The compressor is made up of the following main assemblies: crankcase, crankshaft and connection rods, cylinder body, movement transmission parts, gas and oil waterway system and some other accessories. The power of the compressor is transferred from the motor to the host. The diaphragm completely separates the cylinder from the cylinder. The diaphragm itself vibrates and acts as a piston.

3. PRODUCT FEATURES:



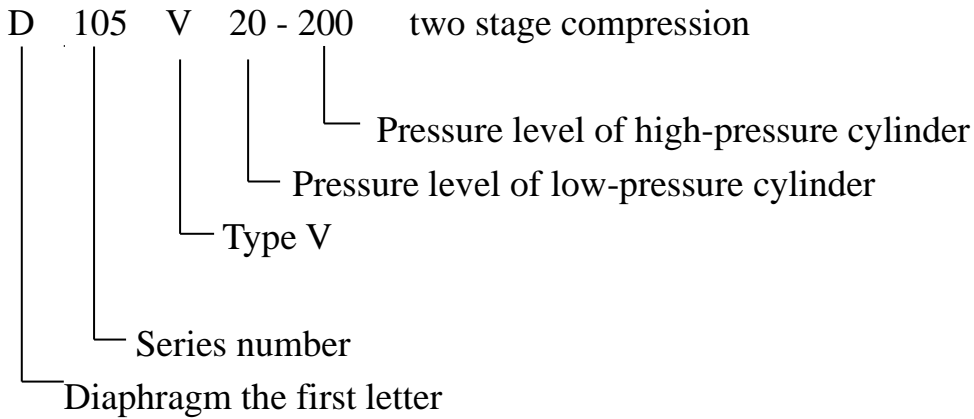
1. High Compression Efficiency Optimal Design of Membrane Convex Curve
2. Good sealing performance Compressed medium high purity medium sealed under static condition, media completely separated
3. Large compression ratio large area of compression cavity
4. Reliable 、 life high 、 safety install high efficiency oil filter use of pressure oil replenishment and reliable alarm system
5. Energy saving good cooling conditions complete cooling after compression
6. Easy to maintain and operate using unmatched pan structure and advanced hydraulic valve

4. PRODUCT APPLICATION

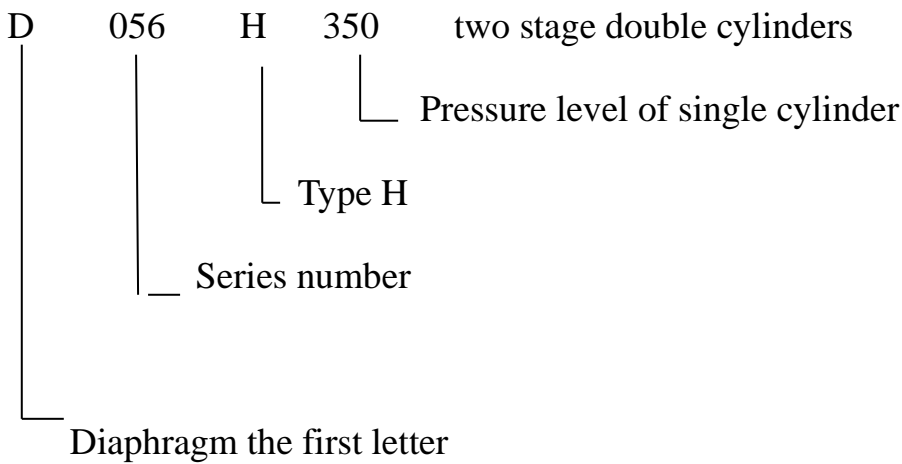


5. PRODUCT MODEL DESCRIPTION

Example 1: D105V20-200



Example 2: D056H350



6. PRODUCT SERIES

6.1 APPLICANT SERIES IN THE FIELD OF HYDROGEN ENERGY

Product Series	Model	Capacity Nm ³ /h	Suction Pressure MPA	Discharge Pressure MP	Speed rpm	Power KW	Cooling water Flow-rate m ³ /h	Overall Dimension (L×W×H) mm	Weight ton
22MPa (Filling using)	D130L70-220	65-170	0.7-1.7	22.0	400	<37	≤3.0	2600×1500×1900	4.5
	D130H-70-220	80-220	0.7-1.7	22.0	400	<45	≤3.8	3000×2100×1700	6.0
	D165L-70-220	150-360	0.7-1.7	22.0	360	<75	≤6.0	3500×2300×2500	9.0
	D186H-70-220	150-420	0.7-1.8	22.0	360	<90	≤7.0	3500×2600×1600	9.0
	D1812H70-220	220-650	0.7-1.9	22.0	363	<132	≤11.0	4200×4200×1900	17.5
	D2116H70-220	350-10000	0.7-1.9	22.0	363	<185	≤16.0	4370×4200×2100	25.0
35MPa (Outside for hydrogen)	D105Z450	25-150	5.0-20.0	45.0	430	<15	≤1.2	1700×1200×1500	1.4
	D130Z450	50-325	5.0-20.0	45.0	430	<22	≤1.8	2100×1500×1900	3.0
	D150Z450	90-600	5.0-20.0	45.0	375	<37	≤3.0	3000×2000×2500	6.5
	D130H450	130-800	5.0-20.0	45.0	430	<55	≤4.5	3000×2000×2500	7.0
	D186H450	200-1200	5.0-20.0	45.0	360	<75	≤6.5	3800×2800×1700	10.0
	D1812H450	330-2000	5.0-20.0	45.0	363	<132	≤11	4200×4200×1900	18.5
35MPa(Integrity of hydrogen)	D130L120-450	60-100	1.0-1.5	45.0	400	<37	≤3.0	2600×1500×1900	4.5
	D130H100-450	95-150	1.0-1.5	45.0	430	<45	≤3.8	3000×2100×1700	6.5
	D165L100-450	125-220	1.0-1.5	45.0	360	<75	≤6.0	3500×2300×2500	9.5
	D186H90-450	135-240	1.0-1.5	45.0	363	<75	≤6.0	3800×2800×1700	9.5
	D1812H100-450	220-350	1.0-1.5	45.0	363	<132	≤10.0	4200×4200×1900	18.0
	D2116H90-450	380-620	1.0-1.5	45.0	363	<185	≤16.0	4370×4200×2100	25.5
70MPa (Outside for hydrogen)	D130Z1000	25-220	10.0-40.0	100.0	430	<22	≤1.8	2100×1500×1900	3.5
	D150Z1000	50-350	10.0-40.0	100.0	375	<37	≤3.0	3000×2000×2500	6.5
	D186H1000	120-800	10.0-40.0	100.0	360	<90	≤7.5	3800×2800×1700	11.0
	D1812H1000	180-1200	10.0-40.0	100.0	363	<132	≤11	4200×4200×1900	19.0

D2116H1000	280-2000	10.0-40.0	100.0	363	<220	≤18.0	4400×4200×2100	27.0
------------	----------	-----------	-------	-----	------	-------	----------------	------

6.2 GENERAL FIELD APPLICATION PRODUCT SERIES

Product Series	Model	Capacity Nm ³ /h	Suction Pressure MPA	Discharge Pressure MP	Speed rpm	Power KW	Cooling water Flow-rate m ³ /h	Overall Dimension (L×W×H) mm	Weight ton
D044L	D044L25-100	1.0~4.0	0.05~0.5	10.0	430	1.5	≤0.1	850×540×900	0.38
	D044L30-160	1.2~2.5	0.14~0.4	16.0	400	1.5	≤0.1	850×540×900	0.38
	D044L160-500	1~3.5	0.9~3.5	50.0	400	1.5	≤0.1	850×540×900	0.38
D044Z	D044Z10	1.5~15	0~0.8	1.0	400	1.1~1.5	≤0.1	850×540×900	0.3
	D044Z20	0.8~15	0~1.5	1.0~2.0	400	1.1~1.5	≤0.1	850×540×900	0.3
	D044Z120	1.5~16	1~10	12.0	400	1.1~1.5	≤0.1	850×540×900	0.3
	D044Z160	1.8~22	1.2~14	16.0	400	1.1~1.5	≤0.1	850×540×900	0.3
	D044Z400	1.8~16	4~35	40.0	400	1.5	≤0.1	850×540×900	0.3
	D044Z500	1.8~16	5~45	50.0	400	1.5	≤0.1	850×540×900	0.3
D056H	D056H350A	26~350	3~30	35.0	500	11~15	≤0.8	1320×1250×1200	0.6
	D056H80-350	8~25	0.3~1	35.0	500	11~15	≤0.8	1600×1100×1200	1.0
D060Z	D060Z10	3~40	0~0.8	1.0	430	1.1~2.2	≤0.2	850×540×1000	0.4
	D060Z15	3~40	0.05~1.2	1.5	430	1.1~2.2	≤0.2	850×540×1000	0.4
D060L	D060L30-160	3~5	0.2~0.4	16.0	400	3~4	≤0.3	1050×560×1100	0.5
	D060L40-160	4~7	0.4~0.8	16.0	400	3~4	≤0.3	1050×560×1100	0.5
	D060L40-200	4~8	0.4~1.0	20.0	400	3~4	≤0.3	1050×560×1100	0.5
	D060L60-250	3.5~7.5	0.5~1.2	25.0	400	3~4	≤0.3	1050×560×1100	0.5

Product Series	Model	Capacity Nm ³ /h	Suction Pressure MPa	Discharge Pressure MPa	Speed rpm	Power KW	Cooling water Flow-rate m ³ /h	Overall Dimension (L×W×H) mm	Weight ton
D070L	D070L10	8~80	0~0.7	1.0	400	3~4	≤0.3	1050×560×1200	0.55
	D070L25-80	4~20	0.1~0.7	8.0	400	3~4	≤0.3	1050×560×1200	0.55
	D070L20-160	3~6	0.02~0.14	16.0	400	3~4	≤0.3	1050×560×1200	0.55
	D070L25-160	4~7	0.1~0.25	16.0	430	3~4	≤0.3	1050×560×1200	0.55
	D070L30-160	3.5~8	0.14~0.4	16.0	400	3~4	≤0.3	1050×560×1200	0.55
	D070L40-160	3~9	0.2~0.75	16.0	400	3~4	≤0.3	1050×560×1200	0.55
	D070L25-200	4~6	0.12~0.2	20.0	400	3~4	≤0.3	1050×560×1200	0.55
	D070L40-200	3.5~8	0.2~0.6	20.0	400	3~4	≤0.3	1050×560×1200	0.55
	D070L80-200	2.5~15	0.2~1.6	20.0	400	3~4	≤0.3	1050×560×1200	0.55
	D070L40-250	2~7	0.1~0.6	25.0	400	3~4	≤0.3	1050×560×1200	0.55
	D070L80-250	3~14	0.3~1.4	25.0	400	3~4	≤0.3	1050×560×1200	0.55
	D070L40-350	3~5	0.2~0.45	35.0	400	3~4	≤0.3	1050×560×1200	0.55

	D070L80-350	3~9	0.3~0.9	35.0	400	3~4	≤0.3	1050×560×1200	0.55
D070Z	D070Z10	4~55	0~0.8	1.0	400	1.5~2.2	≤0.2	850×540×1100	0.47
	D070Z25	7~55	2.5~2.2	2.5	400	1.5~4	≤0.3	850×540×1100	0.47
	D070Z30	6~50	0.3~2.5	3.0	430	1.5~3	≤0.2	850×540×1100	0.47
	D070Z40	5~50	0.4~3.5	4.0	400	1.5~3	≤0.2	850×540×1100	0.47
	D070Z80	8~60	0.8~6	8.0	400	1.5~4	≤0.3	850×540×1100	0.47
	D070Z100	6~60	1~8	10.0	400	1.5~3	≤0.2	850×540×1100	0.47
	D070Z160	5~60	1.6~12	16.0	400	1.5~3	≤0.2	850×540×1100	0.47
	D070Z200	5~60	2~16	20.0	400	1.5~3	≤0.2	850×540×1100	0.47
	D070Z250	5~60	2.5~20	25.0	400	1.5~3	≤0.2	850×540×1100	0.47
	D070Z350	5~60	3.5~30	35.0	400	1.5~3	≤0.2	850×540×1100	0.47
	D070Z400	5~60	4~35	40.0	400	1.5~3	≤0.2	850×540×1100	0.47
D070W	D070W10-80-350	0~0.1	4~8	35.0	400	5.5	≤0.4	1350×880×1350	0.83
	D070W20-100-350	0.1~0.3	5~10	35.0	430	5.5	≤0.4	1350×880×1350	0.83
	D070W10-100-500	0~0.05	4~6	50.0	400	5.5	≤0.4	1350×880×1350	0.83

Product Series	Model	Capacity Nm ³ /h	Suction Pressure MPa	Discharge Pressure MPa	Speed rpm	Power kW	Cooling water Flow-rate m ³ /h	Overall Dimension (L×W×H) mm	Weight ton
D095V	D095V20	12~300	0~1.5	1.0~2.0	400	5.5~7.5	≤0.55	1600×950×1300	0.95
	D095V15-40	10~38	0~0.3	4.0	400	5.5~7.5	≤0.55	1600×950×1300	0.95
	D095V20-40	6~50	0~0.8	4.0	400	5.5~7.5	≤0.55	1600×950×1300	0.95
	D095V20-80	6~22	0~0.3	8.0	400	5.5~7.5	≤0.55	1600×950×1300	0.95
	D095V15-120	10~20	0~0.1	12.0	400	5.5~7.5	≤0.55	1600×950×1300	0.95
	D095V20-120	6.5~18	0~0.2	12.0	400	5.5~7.5	≤0.55	1600×950×1300	0.95
	D095V30-160	9~18	0.15~0.4	16.0	400	5.5~7.5	≤0.55	1600×950×1300	0.95
	D095V40-160	7~27	0.15~0.8	16.0	400	5.5~7.5	≤0.55	1600×950×1300	0.95
	D095V20-200	6	0	20.0	400	4	≤0.3	1600×950×1300	0.95
	D095V40-200	9~27	0.2~0.8	20.0	400	5.5~7.5	≤0.55	1600×950×1300	0.95
	D095V80-200	4.5~37	0.2~2.5	20.0	400	5.5~7.5	≤0.55	1600×950×1300	0.95
	D095V40-350	7~12	0.15~0.3	35.0	400	5.5~7.5	≤0.55	1600×950×1300	0.95
	D095V80-350	6~18	0.35~0.9	35.0	400	5.5~7.5	≤0.55	1600×950×1300	0.95
	D095V200-800	6~15	1~2.5	80.0	400	5.5~7.5	≤0.55	1600×950×1300	0.95
D095Z	D095Z15	10~110	0~1.0	1.5	400	4~5.5	≤0.4	1300×770×1300	0.75
	D095Z20	6~150	0~1.5	1.0~2.0	400	4~5.5	≤0.4	1300×770×1300	0.75
	D095Z30	14~120	0.3~2.5	3.0	400	4~5.5	≤0.4	1300×770×1300	0.75
	D095Z40	14~130	0.4~3.5	4.0	400	4~5.5	≤0.4	1300×770×1300	0.75
	D095Z80	11~120	0.8~7	8.0	400	4~5.5	≤0.4	1300×770×1300	0.75
	D095Z200	12~120	2~16	20.0	400	4~5.5	≤0.4	1300×770×1300	0.75
	D095Z400	5~120	3~35	40.0	400	4~5.5	≤0.4	1300×770×1300	0.75

Product Series	Model	Capacity Nm ³ /h	Suction Pressure	Discharge Pressure	Speed rpm	Power kW	Cooling water Flow-rate	Overall Dimension (L×W×H)	Weight ton
----------------	-------	-----------------------------	------------------	--------------------	-----------	----------	-------------------------	---------------------------	------------

			MPa	MPa			m ³ /h	mm	
D105V	D105V15-160	20~23	0~0.02	16.0	400	15~18.5	≤1.4	1900×1240×1500	1.6
	D105V20-160	12~25	0~0.12	16.0	400	11~15	≤1.2	1900×1240×1500	1.6
	D105V30-160	20~40	0.15~0.4	16.0	400	15~18.5	≤1.4	1900×1240×1500	1.6
	D105V40-160	14~60	0.15~0.8	16.0	400	15~18.5	≤1.4	1900×1240×1500	1.6
	D105V60-160	13~90	0.2~1.5	16.0	400	15~18.5	≤0.8	1900×1240×1500	1.6
	D105V80-160	14~100	0.25~2.3	16.0	400	18.5	≤1.4	1900×1240×1500	1.6
	D105V20-200	12~18	0~0.05	20.0	400	7.5~11	≤0.8	1900×1240×1500	1.6
	D105V50-200	16~55	0.2~0.9	20.0	400	18.5	≤0.8	1900×1240×1500	1.6
	D105V60-200	15~60	0.2~1	20.0	400	15~18.5	≤1.4	1900×1240×1500	1.6
	D105V80-200	16~30	0.3~0.8	20.0	400	15~18.5	≤1.4	1900×1240×1500	1.6
	D105V60-350	13~30	0.2~0.55	35.0	400	11~15	≤1.2	1900×1240×1500	1.6
	D105V80-350	7~40	0.4~1.1	35.0	400	15~18.5	≤0.8	1900×1240×1500	1.6
D105L	D105L15-160	20~23	0~0.02	16.0	400	15~18.5	≤1.4	1900×1240×1500	1.6
	D105L20-160	12~25	0~0.12	16.0	400	11~15	≤1.2	1900×1240×1500	1.6
	D105L20-200	12~18	0~0.05	20.0	400	7.5~11	≤0.8	1900×1240×1500	1.6
D105Z	D105Z15	20~300	0~1.2	1.5	400	7.5~11	≤0.8	1700×1200×1500	1.4
	D105Z20	12~250	0~1.4	2.0	400	7.5~11	≤0.8	1700×1200×1500	1.4
	D105Z30	32~250	0.3~2.5	3.0	400	7.5~11	≤0.8	1700×1200×1500	1.4
	D105Z60	32~340	0.6~5.5	6.0	400	7.5~11	≤0.8	1700×1200×1500	1.4
	D105Z80	32~340	0.8~7.5	8.0	400	7.5~11	≤0.8	1700×1200×1500	1.4
	D105Z160	22~300	1.4~14	16.0	400	7.5~11	≤0.8	1700×1200×1500	1.4
	D105Z200	18~250	1.4~16	20.0	400	7.5~11	≤0.8	1700×1200×1500	1.4
D105Z350	18~300	3~30	35.0	400	7.5~11	≤0.8	1700×1200×1500	1.4	

Product Series	Model	Capacity Nm ³ /h	Suction Pressure MPa	Discharge Pressure MPa	Speed rpm	Power kW	Cooling water Flow-rate m ³ /h	Overall Dimension (L×W×H) mm	Weight ton
D130H	D130H10	90~180	0~0.1	1.0	360	22~37	≤3.2	3000×2000×1500	5.0
	D130H40	1200	2.2	4.0	360	22	≤1.8	3000×2000×1500	5.0
	D130H20-200	28~56	0~0.1	20.0	360	18.5~22	≤1.8	3000×2000×1500	5.0
	D130H30-250	70	0.25	25.0	360	30	≤2.5	3000×2000×1500	5.0
	D130H50-160	200	1.2	16.0	360	45	≤3.8	3000×2000×1500	5.0
	D130H60-250	175	1.0	25.0	360	45	≤3.8	3000×2000×1500	5.0
	D130H70-250	240	1.8	25.0	400	45	≤3.8	3000×2000×1500	5.0



SinoCleansky

Add: 5th Floor, Tower3A, Wangjing SOHO, Chaoyang District, Beijing, China

Tel: +86-10-64709959 Web: www.sinocleansky.com

Postcode: 100102

Email: sales@sinocleansky.com

	D130H80-350	120	1.2	35.0	400	45	≤3.8	3000×2000×150 0	5.0
2D130 H	2D130H10-50	200~300	0.1~0.2	5.0	360	75	≤6.0	4200×2200×230 0	9.0
	2D130H15	160~2800	0~1.2	1.5	360	45~7 5	≤6.0	3500×2200×190 0	8.0
	2D130H15-30	70~300	0~0.3	3.0	360	45~5 5	≤4.5	3500×2200×190 0	8.0
	2D130H20-60	60~320	0~0.45	6.0	360	55	≤4.5	3500×2200×190 0	8.0
	2D130H30-60	100~540	0.2~1.3	6.0	360	55	≤4.5	3500×2200×190 0	8.0
	2D130H60-20 0	90~320	0.35~1. 4	20.0	360	55	≤4.5	3500×2200×190 0	8.0
	2D130H50-11 0-250	100~220	0.2~0.5 5	25.0	360	75	≤6.0	3500×2200×190 0	8.0
D130L	D130L15	80~1400	0~1.2	1.5	400	18.5 ~37	≤3.2	2600×1630×185 0	4.0
	D130L25	160~1300	0.25~2	2.5	400	22~3 7	≤3.2	2600×1630×185 0	4.0
	D130L30	140~1200	0.3~2.5	3.0	400	30~3 7	≤3.2	2600×1630×185 0	4.0
	D130L15-40	40~200	0~0.4	4.0	400	22~3 7	≤3.2	2600×1630×185 0	4.0
	D130L20-60	30~160	0~0.45	6.0	400	22~3 7	≤3.2	2600×1630×185 0	4.0
	D130L50-160	40~180	0.2~1.2	15.0	400	22~3 7	≤3.2	2600×1630×185 0	4.0
	D130L15-200	40~45	0~0.01 2	20.0	400	22	≤1.8	2240×1490×185 0	4.0
	D130L20-200	28~56	0~0.1	20.0	400	18.5 ~22	≤1.8	2240×1490×185 0	4.0
	D130L25-200	20~80	0~0.2	20.0	400	15~3 7	≤3.2	2600×1630×185 0	4.0
D130V	D130V20	56~1200	0~1.5	1.0~2.0	400	22~37	≤3.2	2600×1630×185 0	4.0
	D130V20-60	30~170	0~0.5	6.0	400	22~37	≤3.2	2600×1630×185 0	4.0
	D130V20-70	30~130	0~0.35	7.0	400	22~37	≤3.2	2600×1630×185 0	4.0
	D130V20-160	30~60	0~0.1	16.0	400	18.5 ~22	≤1.8	2240×1490×185 0	4.0
	D130V20-200	28~56	0~0.1	20.0	400	18.5 ~22	≤1.8	2240×1490×185 0	4.0

	D130V30-200	37~85	0.1~0.3 5	20.0	400	22~37	≤3.2	2600×1630×185 0	4.0
	D130V40-200	45~100	0.2~0.6 5	20.0	400	22~37	≤3.2	2600×1630×185 0	4.0
	D130V50-200	20~120	0.3~0.8	20.0	400	22~37	≤3.2	2600×1630×185 0	4.0
	D130V60-200	45~160	0.35~1. 4	20.0	400	22~37	≤3.2	2600×1630×185 0	4.0
	D130V70-200	40~190	0.4~2	20.0	400	22~37	≤3.2	2600×1630×185 0	4.0
	D130V200	80~1000	1.3~11	20.0	400	22~37	≤3.2	2600×1630×185 0	4.0
	D130V30-250	37~60	0.1~0.2 5	25.0	400	22~37	≤3.2	2600×1630×185 0	4.0
	D130V60-250	30~90	0.25~1	25.0	400	22~37	≤3.2	2600×1630×185 0	4.0
	D130V70-250	36~120	0.35~1. 3	25.0	400	22~37	≤3.2	2600×1630×185 0	4.0
	D130V120-250	36~250	0.6~4.5	25.0	400	22~37	≤3.2	2600×1630×185 0	4.0
	D130V80-350	34~90	0.4~1	35.0	400	22~37	≤3.2	2600×1630×185 0	4.0
	D130V120-450	32~120	0.65~2. 4	45.0	400	22~37	≤3.2	2600×1630×185 0	4.0
D130Z	D130Z15	40~700	0~1.2	1.5	400	15~1 8.5	≤1.4	1800×1290×190 0	2.6
	D130Z20	28~600	0~1.5	1.0~2.0	400	15~1 8.5	≤1.4	1800×1290×190 0	2.6
	D130Z30	70~600	0.3~2.5	3.0	400	15~1 8.5	≤1.4	1800×1290×190 0	2.6
	D130Z50	70~700	0.5~4.5	5.0	400	15~1 8.5	≤1.4	1800×1290×190 0	2.6
	D130Z160	46~650	1.2~14	16.0	400	15~1 8.5	≤1.4	1800×1290×190 0	2.6
	D130Z200	40~650	1.3~16	20.0	400	15~1 8.5	≤1.4	1800×1290×190 0	2.6
	D130Z450	40~650	4~40	45.0	400	22	≤1.8	1800×1290×190 0	2.6
	D130Z800	36~600	8~70	80.0	400	22	≤1.8	1800×1290×190 0	2.6
	D130Z1000	30~500	10~80	100.0	400	22	≤1.8	1800×1290×190 0	2.6

Product	Model	Capacity	Suction	Discharge	Speed	Power	Cooling	Overall Dimension	Weight
---------	-------	----------	---------	-----------	-------	-------	---------	-------------------	--------

Series		Nm ³ /h	Pressure MPa	Pressure MPa	rpm	kW	water Flow-rate m ³ /h	(L×W×H) mm	ton
D150L	D150L15	120~154	-0.02~0.006	0.3~0.5	360	30~37	≤2.5	3200×2000×2550	7.5
	D150L20-200	40~70	0~0.08	20.0	360	30~37	≤3.2	3200×2000×2550	7.0
	D150L50-200	80~260	0.3~1.0	20.0	360	37~75	≤6.0	3500×2300×2550	7.5
	D150L80-250	170~250	1.0~1.5	25.0	360	75	≤6.0	3500 ×2400×1900	7.5
D150Z	D150Z200	40~1100	1.3~16.0	20.0	360	22~37	≤3.2	2600×1630×2550	6.0
	D150Z800	90~500	10.0~40.0	80.0	360	22~37	≤3.2	2600×1630×2550	6.0
D165L	D165L50-200	90~300	0.3~1.0	20.0	360	37~75	≤6.0	3500×2300×2550	9.0
	D165L60-250	75~250	0.3~1.2	25.0	360	37~75	≤6.0	3500×2300×2550	9.0
	D165L80-250	200~300	1.0~1.5	25.0	360	37~75	≤6.0	3500×2300×2550	9.0
	D165L80-350	55~210	0.3~1.2	35.0	360	37~75	≤6.0	3500×2300×2550	9.0
D165H	D165H20	250~1400	0.1~1.0	1.5~2.0	360	37~75	≤6.0	3800×2300×1700	9.0
	D165H15-80	70~220	0~0.2	8.0	360	37~75	≤6.0	3800×2300×1700	9.0
	D165H25-60	80~380	0.1~0.7	6.0	360	37~75	≤6.0	3800×2300×1700	9.0
	D165H60-160	200~380	1.0~2.0	16.0	360	37~75	≤6.0	3800×2300×1700	9.0
	D165H50-200	90~300	0.3~1.0	20.0	360	37~90	≤6.0	3800×2300×1700	9.0
	D165H60-250	75~250	0.3~1.2	25.0	360	37~90	≤6.0	3800×2300×1700	9.0
	D165H80-250	200~300	1.0~1.5	25.0	360	37~90	≤6.0	3800×2300×1700	9.0
	D165H80-350	55~210	0.3~1.2	35.0	360	30~75	≤6.0	3800×2300×1700	9.0

Product Series	Model	Capacity Nm ³ /h	Suction Pressure MPa	Discharge Pressure MPa	Speed rpm	Power kW	Cooling water Flow-rate m ³ /h	Overall Dimension (L×W×H) mm	Weight ton
D180H	D186H70-220	225-300	1.0-1.5	22.0	375	75	≤7.0	3500x2600x1600	9.0
	D186H18-180	100-200	0.05-0.2	8.0	360	75	≤5.5	3500x2600x1600	9.0
	D188H200	4500	18.0	20.0	360	55	≤4.5	4200×4000×1900	14.2
	D188H30-200	170	0.2	20.0	360	75	≤6.0	4200×4000×1900	14.2
	D188H40-200	280	0.6	20.0	360	75	≤6.0	4200×4000×1900	14.2
	D188H60-250	500	1.0	25.0	360	132	≤11.0	4200×4000×1900	14.2
	D188H70-250	300-42-	1.0-1.5	25.0	363	110	≤9.0	4200×4000×1900	14.2
	D188H80-450	200~300	1.0~1.5	45.0	360	90	≤7.0	4200×4000×1900	14.2
	D188H50-200-750	150~300	0.5~1.0	75.0	360	132	≤11.0	4200×4000×2300	16.0
	D1812H30	1000	0.5	3.0	360	110	≤9.0	4200×4200×1900	17.5
D1812H70	2600	3.0	7.0	360	110	≤9.0	4200×4200×1900	17.5	

	D1812H200	6400	18.0	20.0	360	75	≤6.0	4200×4200×1900	17.5
	D1812H40-250	300	0.5	25.0	360	110	≤9.0	4200×4200×1900	17.5
	D1812H70-250	420~600	1.0~1.5	25.0	360	132	≤11.0	4200×4200×1900	17.5
	D1812H70-350	300	0.8	35.0	360	110	≤9.0	4200×4200×1900	17.5
	D1812H80-450	300	1.0	45.0	360	110	≤9.0	4200×4200×1900	17.5
	D1812H150-750	300	2.0	75.0	360	110	≤9.0	4200×4200×1900	17.5
	D1812H60-250-750	350	0.7	75.0	360	160	≤13.0	4200×4200×2550	20.5
2D180H	2D1812H35-250	220-600	0.1-0.4	22.0	363	185	≤16.0	6090×4236×2200	25.0
	2D1812H70-250	840~1200	1.0~1.5	25.0	363	185~250	≤20.0	4200×4200×2550	25.0
D210H	D2116H70-220	350~1000	0.7~1.9	22.0	363	< 185	≤16.0	4370×4200×2100	25.0
	D2116H70-450	380~620	1.0~1.5	45	363	< 185	≤16.0	4370×4200×2100	25.0
	D2116H450	500~3100	5.0~20.0	45	363	< 220	≤18.0	4370×4200×2100	25.0

7. AFTER-SALE WARRANTY

Our company provides spare parts and after-sales service for the lifelong and timely products. The product implements three guarantees (i.e., return, replacement, repair), the whole machine is guaranteed for one year, and any manufacturing, design, production, etc. are caused during the warranty period. The quality problem is repaired by our company and the parts are replaced without compensation. According to the needs of users, after the equipment is in place, our company will send experienced technical and technical personnel to carry technical information and drawings to the site for guidance installation, and commissioning, provide technical training and after-sales service for users, and timely solve the problems in operation. Ensure the normal operation of the equipment.



BEIJING SINOCLEANSKY TECHNOLOGIES CORP

Add: 5th Floor, Tower 3A, WangjingSOHO, 10 Wangjing Street, Chaoyang District, Beijing P.R.China
Tel: +86-010- 64709959 **E-mail:** sales@sinocleansky.com