



SinoCleansky
Gas Container & Solution

Cryogenic Transport Tanker

We keep devoting ourselves to the development and production of cryogenic liquid transport equipment. The products are widely used in the LNG and other liquid industrial gases storage and transport.

Portable Cryogenic Tank (PCT)

Manufacture standard: ASME
Capacity: 1M³, 2M³, 3M³, 4M³, 5M³, 7M³, etc.
Working pressure: 1.6MPa, 2.5MPa
Medium: LOX, LIN, LAr, LCO₂, LNG
Insulation: High-vacuum multi-layer insulation.



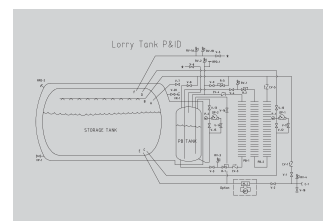
Cryogenic Road Tanker (without chassis, without pump)

Manufacture standard: ASME
Capacity: 3M³ - 20M³.
Working pressure: 1.6MPa, 2.2MPa, 2.4MPa, etc
Medium: LOX, LIN, LAr, LCO₂, LNG
Insulation: High-vacuum multi-layer insulation.



Cryogenic Road Tanker with PB tank (without chassis)

Cryogenic Road Tanker with PB tank (without chassis)
Manufacture standard: ASME
Capacity: 3M³ - 20M³.
Working pressure: 1.8MPa
Medium: LOX, LIN, LAr, LCO₂, LNG
Insulation: High-vacuum multi-layer insulation.



Cryogenic Road Tanker with pump (without chassis)

Manufacture standard: ASME
Capacity: 3M³ - 20M³.
Working pressure: 0.4MPa
Medium: LOX, LIN, LAr, LCO₂, LNG
Insulation: High-vacuum multi-layer insulation.



MicroBulk Delivery Systems (with pump & flowmeter)

Insulation: High-vacuum multi-layer insulation.
Volume: 1057-5283 gal / 4-20M³
Discharging pressure: 0.8-3.5MPa / 0.8-1.6MPa
Medium: LOX, LIN, LAr, LCO₂, LNG
Note: We only provide loading part of lorry tanker, without chassis and head.





SinoCleansky
Gas Container & Solution



Cryogenic Semi-trailer for industrial Gas LOX,LIN,LAr

NO	NAME	LOX Semi-trailer		LIN Semi-trailer		LAr Semi-trailer	
1	Model No	SCS-GB-27.39M ³ -0.3MPA		SCS-GB-37.2M ³ -0.3MAP		SCS-GB-22.8M ³ -0.3MAP	
2	Total Volume	27.39M ³		37.2M ³		22.8M ³	
3	Effective Volume	25.47M ³		34.6M ³		21.2M ³	
4	Working Pressure	0.3MPA		0.3MPA		0.3MPA	
5	Loading Medium	LOX		LIN		LAr	
6	Desdign Code	GB(Chinese Standard)		GB(Chinese Standard)		GB(Chinese Standard)	
7	Main Material	Inner Vessel	S30408	Inner Vessel	S30408	Inner Vessel	S30408
		Outer Vessel	Q345R	Outer Vessel	Q345R	Outer Vessel	Q345R
8	Design Temperature	-196/50℃		-196/50℃		-196/50℃	
9	Isolating Type	High Vacuum Multilayer Insulating		High Vacuum Multilayer Insulating		High Vacuum Multilayer Insulating	
10	Total Net Weight	10940KG		12080KG		10445KG	
11	Dimensions	12065×2520×3455mm		12720×2520×3700mm		11950×2520×3290mm	

Cryogenic Semi-trailer for LCO₂

NO	NAME	PARAMETERS
1	Model No	LCO ₂ Semi-Trailer
2	Design Volume	29.7M ³
3	Working Pressure	2.2Mpa
4	Loading Medium	LCO ₂
5	Design Code	GB (Chinese Standard)
6	Main Material(Inner Vessel)	WH590E
7	Design Temperature	-40/+50℃
8	Isolating Type	Foam
9	Total Weight	40000KG
10	Equipment weight	13270KG
11	Rated loading weight	26730KG
12	Dimensions	12610X2500X3630mm

Cryogenic Semi-trailer for LNG

NO	NAME	PARAMETERS
1	Model No	SCS-ASME-52.6M ³ -0.7MPA
2	Total Volume	52.6M ³
3	Effective Volume	47.34M ³
4	Working Pressure	0.7Mpa
5	Loading Medium	LNG
6	Design Code	ASME
7	Main Material	Inner Vessel S30408/S30408III
		Outer Vessel Q345R/16MnII
8	Design Temperature	-196/50℃
9	Isolating Type	High Vacuum Multilayer Insulating
10	Total Net Weight	17440 KG
11	Dimensions	13000x2500x3800mm

Remark: 1. All the semi-trailer is with chassis without tractor head.

2. The parameter is for reference, the final datasheet based on production drawing.

