



SinoCleansky  
Gas Container & Solution

## Jumbo Cylinder ( Container, Skid, Trailer )

“Ideal Solution for CNG and Industrial Gases Storage and Transportation”



Jumbo cylinder produced as per ISO11120, DOT, or ASME standard, with TPED approval. Jumbo tube container with ADR, IMDG and RID certificate, and inspection report issued by BV, LRS, TUV or equivalent international third-party.

### Application

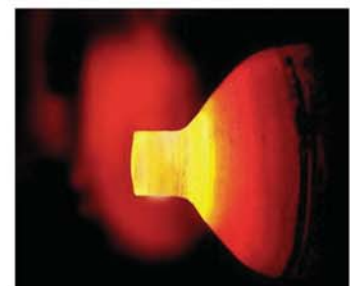
SinoCleansky jumbo cylinder skid / container / trailers are widely used for ground stationary storage and intermodal transportation.

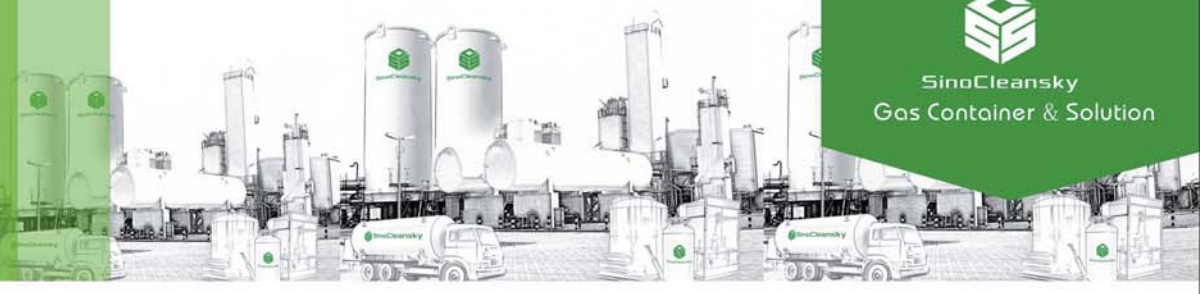
The filling medium including CNG and various industrial gases such as Hydrogen, Argon Nitrogen, Helium, Purified Gas, Compressed Air, etc.



### Features of SinoCleansky high-pressure jumbo gas cylinder

- Heat-spinning technology;
- Walking beam continuous heat treatment;
- Large-size structure and fewer valves, tubes and joints;
- Concise design, less maintenance on site;
- Lower weight of design;
- Additional gas-filling devices.





### Popular Type for Industrial Gas and Hydrogen and CNG

Model No.	SCS0825CS-40F-559	SCS0925CS-40F-559	SCS1025CS-40F-559	SCS1125CS-40F-559	SCS1225CS-40F-559	SCS1225CS-20F-559
Cylinder quantity	8	9	10	11	12	12
Working pressure/MPa	25	25	25	25	25	25
Cylinder size/mm	OD559x17.4x10975	OD559x17.4x10975	OD559x17.4x10975	OD559x17.4x10975	OD559*17.4*10975	OD559*17.4*5400
Steel type	4130X	4130X	4130X	4130X	4130X	4130X
Working temperature	-50-65℃	-50-65℃	-50-65℃	-50-65℃	-50-65℃	-50-65℃
Equipment weight /KG	25752	28721	31490	34259	37028	19632
Water volume/M <sup>3</sup>	17.68	19.89	22.1	24.31	26.52	12.6
Filling gas volume /NM <sup>3</sup>	5569	6265	6961	7657	8353	3969
Total weight/KG	29730	33197	36462	39728	42995	22467
Skid/Trailer dimension	12192x2438x1400	12192x2438x1890	12192x2438x1890	12192x2438x1890	12192x2438x2000	6058x2438x2000

★ For Hydrogen, the jumbo tube working pressure is 20mpa, other data will be adjusted accordingly.

### Light Type for CNG

Model No.	SCS0825CS-40F-559	SCS0925CS-40F-559	SCS1025CS-40F-559	SCS1125CS-40F-559	SCS1225CS-40F-559	SCS1225CS-20F-559
Cylinder quantity	8	9	10	11	12	12
Working pressure/MPa	25	25	25	25	25	25
Cylinder size/mm	OD559*14.8*11570	OD559*14.8*11570	OD559*14.8*11570	OD559*14.8*11570	OD559*14.8*11577	OD559*14.8*4950
Steel type	30CrMoLX	30CrMoLX	30CrMoLX	30CrMoLX	30CrMoLX	30CrMoLX
Working temperature	-50-65℃	-50-65℃	-50-65℃	-50-65℃	-50-65℃	-50-65℃
Equipment weight /KG	24240	27020	29600	32180	34760	17580
Water volume/M <sup>3</sup>	19.6	22.05	24.5	26.95	29.4	12.792
Filling gas volume /NM <sup>3</sup>	6174	6945	7717	8489	9261	4029
Total weight/KG	28650	31981	35112	38243	41375	20480
Skid/Trailer dimension	12192x2438x1400 (skid)	12192x2438x1890 (skid)	12192x2438x1890 (skid)	12192x2438x1890 (skid)	12192x2438x2000 (skid)	6058x2438x2000 (skid)

Remark: 1、 The data of filling gas volume, loading weight and total weight is based on CNG.

2、 The above specifications are only for our typical types. The more accurate & detailed parameters and technical drawings are available upon request.

### Shipment

