



SinoCleansky  
Gas Container & Solution



## LNG Engineered Solution

Beijing SinoCleansky Technologies Corp specializes in natural gas industry and supplies a one-stop-solution for LNG and CNG with product, technology and service.

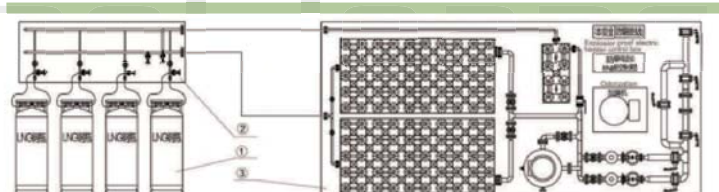
For professional clients of Mini LNG, LCNG satellite station, LNG regasification and etc., SinoCleansky takes its industrial experience and technology expertise to provide the excellent customized technical solutions.

### Guide for LNG Solution Model Selection

Gas Consumption Capacity Nm <sup>3</sup> /day	Gas Supply Model	Max. Gas Supply NM <sup>3</sup> /H
Below 200	Cylinders	N·7/N·11
100~2,000	Gas Cylinder Group Skid Station	200 Typical models: 100, 150, 200NM <sup>3</sup> /H
Around 1000	Microbulk Regas Station	200
500~1000	Modular Bulk Regas Station	2000
For NGV	LNG Refueling Station L-CNG Refueling Station	Customized

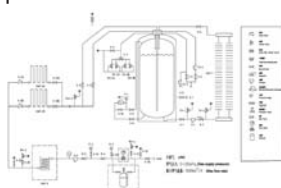
### LNG Cylinder or Cylinder Group Regas Station

- LNG cylinder or cylinder group: for LNG transfer, storage, and supply solution.
- LNG periportal skid: for LNG and BOG gas assemble and transported to LNG gasification output pry.
- LNG regasification output skid: for LNG gasification, complex heat, pressure regulator, metering, odorizer, so that post-gasification of nature gas in accordance with the requirements of the user constant temperature, constant pressure to the output.



### Skid-mounted LNG Microbulk Regas Station (Small LNG satellite Station)

- LNG Microbulk Regas station is a smart and modular design for small LNG applications. The whole LNG station is built on skid, with LNG storage, regasification, pressure regulation, measurement, odorization, etc. which is very convenient for installation and operation. Typical models are 1M<sup>3</sup>, 2M<sup>3</sup>, 3M<sup>3</sup>, 5M<sup>3</sup>, 7.2M<sup>3</sup> till 15M<sup>3</sup>. Customization is available upon your specific requirements.



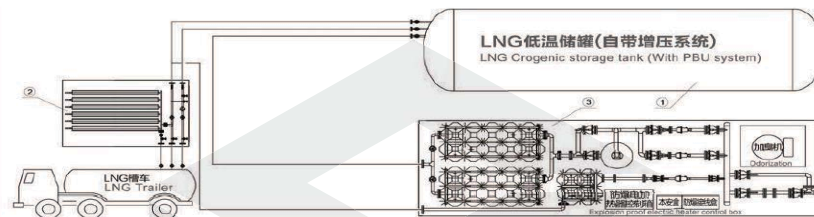


SinoCleansky  
Gas Container & Solution



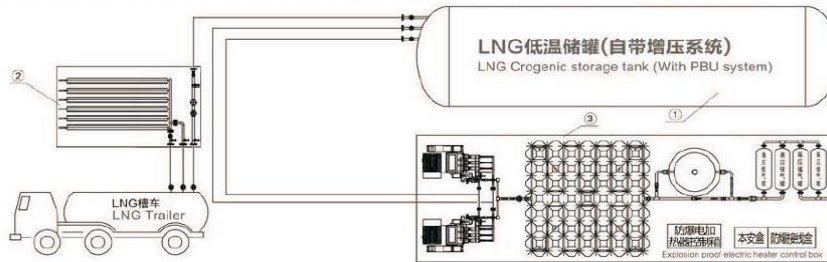
## LNG Bulk Modular Regas Station

- LNG storage tank skid: for LNG storage and the fluid supply, generally purchased or provided directly by the user.
- Unloading PBU skid: for boosting and the constant pressure when the LNG tanker unloading fluid, then the LNG storage tanks can reach the normal fluid pressure difference, so the LNG tankers can irrigation charging.
- When the flow rate  $\geq 1000 \text{Nm}^3/\text{h}$ , it is recommended LNG vaporizer prized separately or foundational separately on-site.



## L-CNG Vehicle Refueling Station

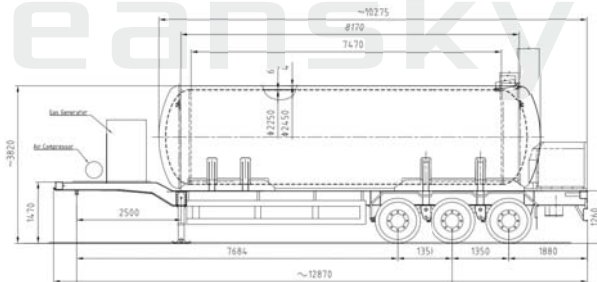
- Skid-mounted and Modular design, customized for you.



## LNG Mobile Refueling station

- A whole station combined into one LNG semi-trailer, incl LNG tanker, submerge pump, dispenser and all accessories.

项 目	Description	Inner Vessel	Outer Jacket
最大允许工作压力	MAWP: MPa (psi)	1.2 (175)	-0.1 (14.5)
设计压力	Design Pressure: MPa (psi)	1.32 (191)	-0.1 (14.5)
设计温度	Design Temperature: $^{\circ}\text{C}$ ( $^{\circ}\text{F}$ )	-161.4 (-258.5)	50 (122)
材料	Material	SA240 304	Q345R
建造标准	Code	ASME VIII Sec.1	CGA341-2007
储运介质	Medium	LNG	
本容积	Gross Volume: L	33,000	
载重量	Payload: kg	12,850	
加液方式	Dispense Method	Submerged Pump	
泵	Pump	TC-34	
最小加气速率	Min. Dispensing Rate: (gpm/Lpm)	10/38	
最大加气速率	Max. Dispensing Rate: (gpm/Lpm)	100/378	
最大加气压力	Max. Dispensing Pressure: (psig/barg)	210/14.4	
接受罐最大压力	Max Receiving Tank Pressure: (psig/barg)	145/10	



## Cases on site

